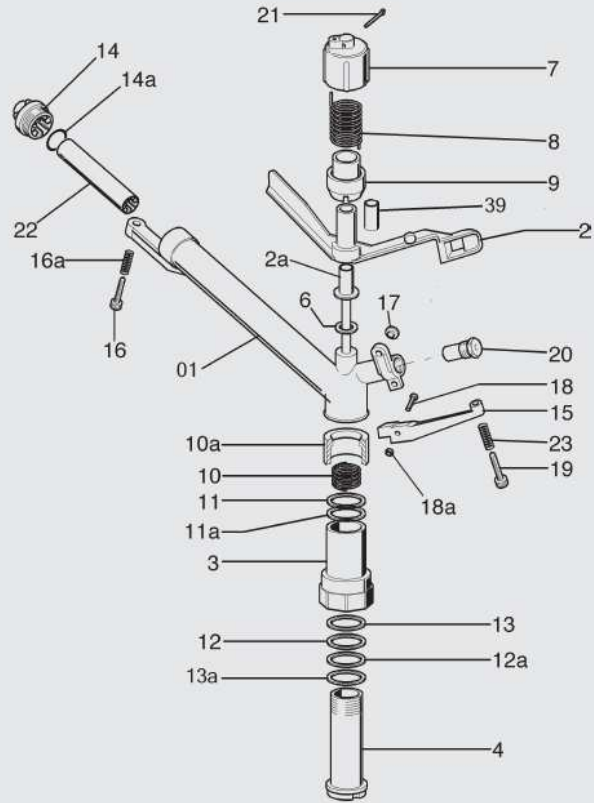
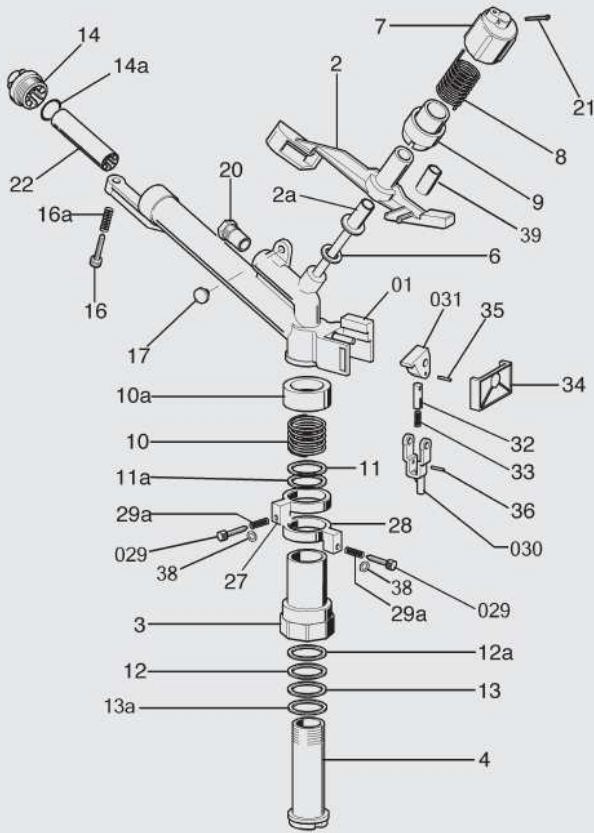




Part Circle

Full Circle



Spare parts: When ordering spare parts, please specify type of sprinkler and code number.

Data, weights and dimensions are not binding for the manufacturer, who reserves the right to bring changes as he sees fit.

Code	Fig No.	Qty	Description	Code	Fig No.	Qty	Description	Code	Fig No.	Qty	Description
			PART CIRCLE	145731kit	031	1	Secondary Lever	145617	17	1	Knob
145701kit	01	1	Sprinkler Body	145732	32	1	Spring House	145618	18	1	Screw
145702kit	02	1	Arm	145733	33	1	Inversion Spring	145618a	18a	1	Locking Nut
145702a	2a	1	Bush	145734	34	1	Inversion Lever Cover	145619	19	1	Jet Breaker Screw
145603	3	1	External Body	145735	35	1	Pin For Lever	145620	20	1	Nozzle (Secondary)
141804	4	1	Internal Body	145736	36	1	Pin For Lever	145621	21	1	Cap Split Pin
145706	6	1	Shaft Washer	145738	38	1	Washer	145622	22	1	Water Rectifier
145607	7	1	Arm Spring Cap	140366	39	1	Du-Bearing	141825a	23	1	Spring
145608	8	1	Arm Spring				FULL CIRCLE	145624	24	1	Wedge
145609	9	1	Spring Support	145601kit	01	1	Sprinkler Body	145625	25	1	Washer
145610	10	1	Friction Spring	145602kit	02	1	Arm	140128a	26	1	Nut
145610a	10a	1	Friction Spring Cover	145602a	2a	1	Bush	145626a	26a	1	Screw
141811	11	1	Friction Washer	145603	3	1	External Body	140366	39	1	Du-Bearing
141812	11a	1	Teflon Washer	141804	4	1	Internal Body				
141812	12	1	Teflon Washer	145606	6	1	Shaft Washer				
141812a	12a	1	Vulk Washer	145607	7	1	Arm Spring Cap				
145613	13	1	Inox Washer	145608	8	1	Arm Spring				
141813	13a	1	Rubber Washer	145609	9	1	Spring Support				
145614	14	3	Main Nozzle	145610	10	1	Friction Spring				
145614a	14a	1	Nozzle O-Ring	145610a	10a	1	Friction Spring Cover				
141816	16	1	Jet Breaker Screw	141811	11	1	Friction Washer				
141837	16a	1	Jet Breaker Spring	141812	11a	1	Teflon Washer				
145617	17	1	Knob	141812	12	1	Teflon Washer				
145620	20	1	Nozzle Secondary	141812a	12a	1	Vulk Washer				
145621	21	1	Cap Split Pin	145613	13	1	Inox Washer				
145622	22	1	Water Rectifier	141813	13a	1	Rubber Washer				
141817	27	1	Stopper Ring	145614	14	3	Nozzle (Main)				
145728kit	028	1	Complete Inversion Ring	145614a	14a	1	Nozzle O-Ring				
141817	28	1	Stopper Ring	145615kit	015		Complete Jet Breaker				
145729kit	029	2	Inversion Screw	145615	15	1	Jet Breaker				
141825a	29a	1	Spring	141816	16	1	Jet Breaker Screw				
145730kit	030	1	Primary Lever	141837	16a	1	Jet Breaker Spring				